

20/00643/FUL

Corbett Business Park

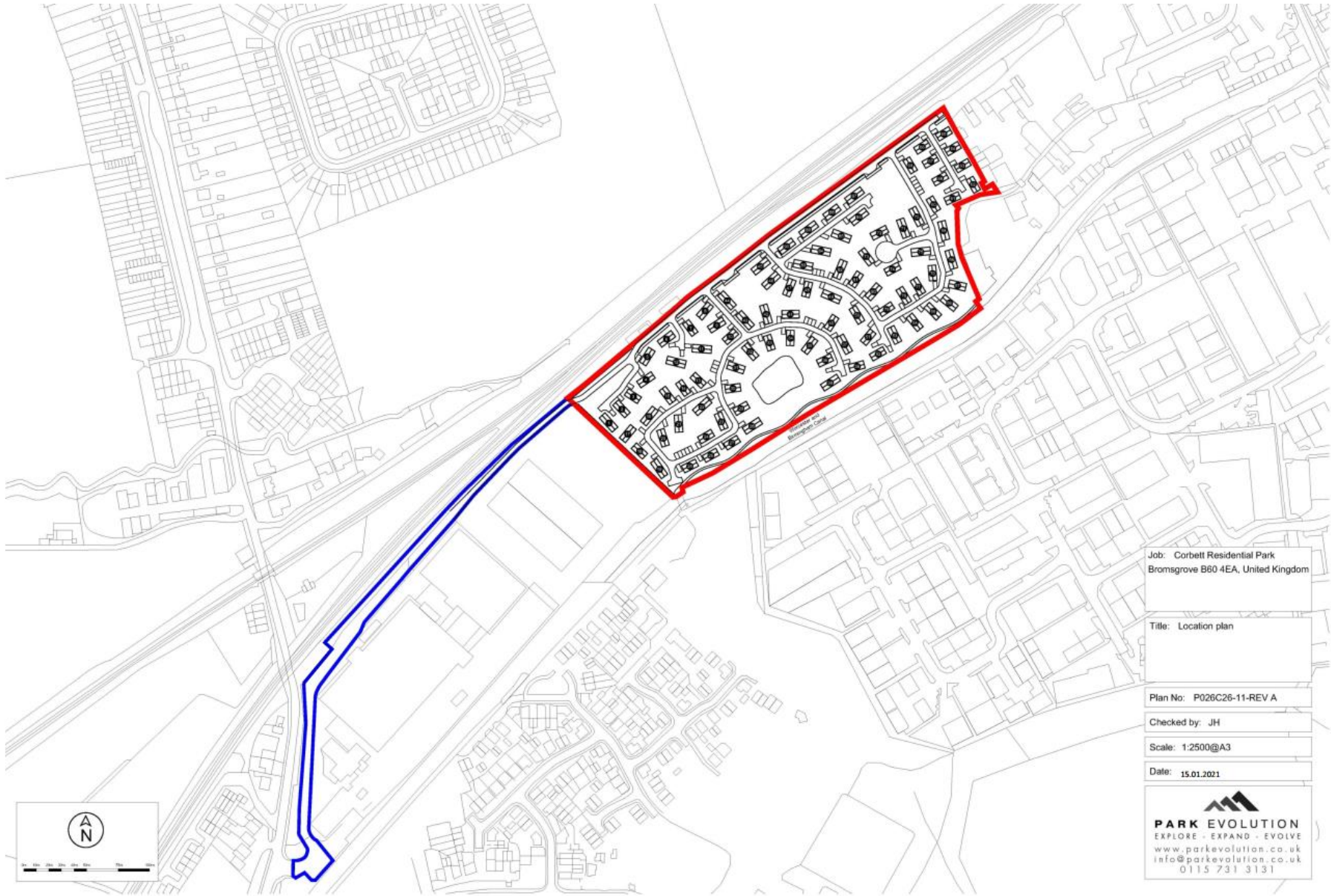
Shaw Lane, Stoke Prior

B60 4EA

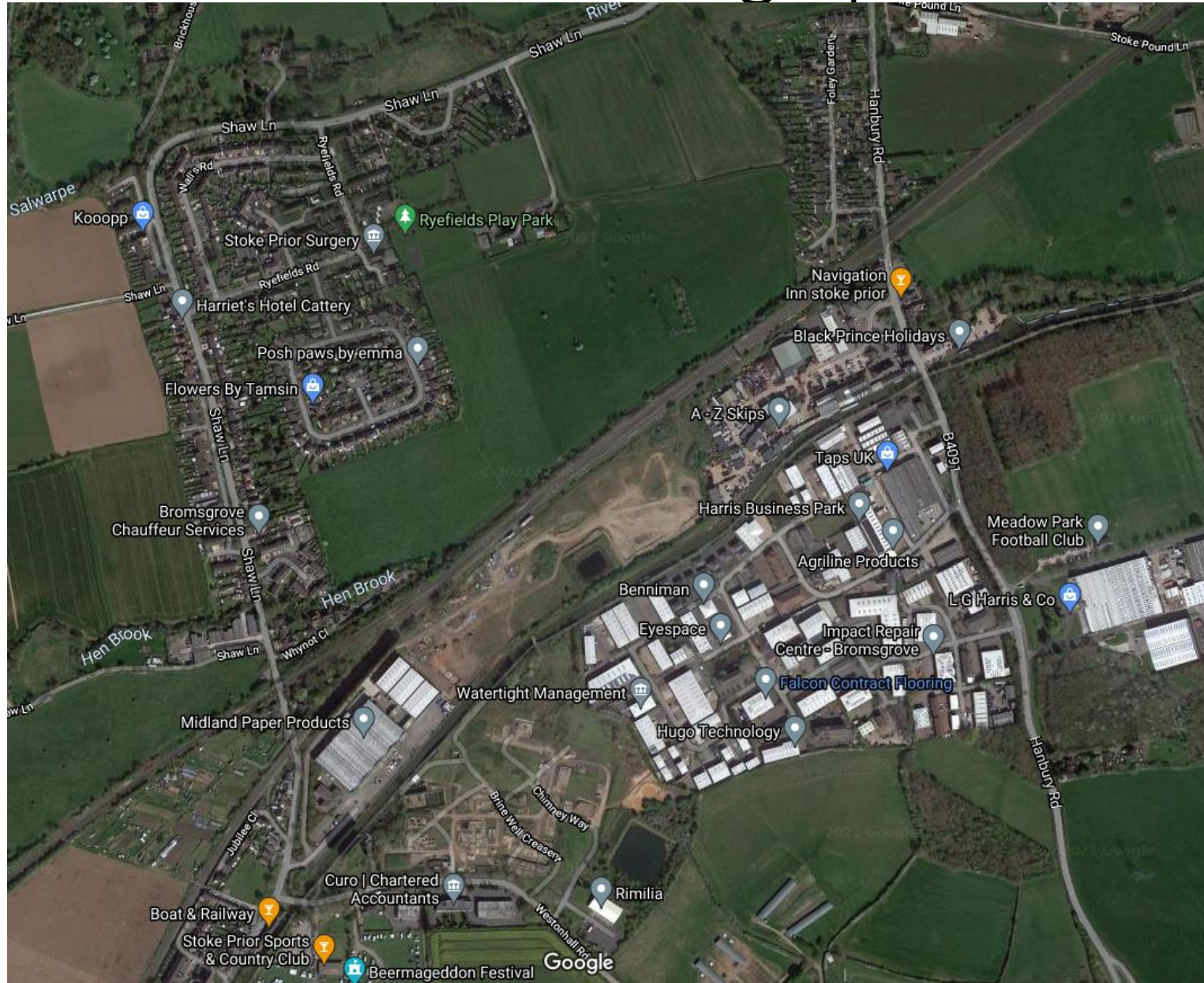
Full Planning Permission for the use of land for the stationing of 90 static residential park homes for the over 55s, with associated parking, internal service roads, and landscaping and acoustic fence to the north, east and west boundaries

Recommendation: Refusal

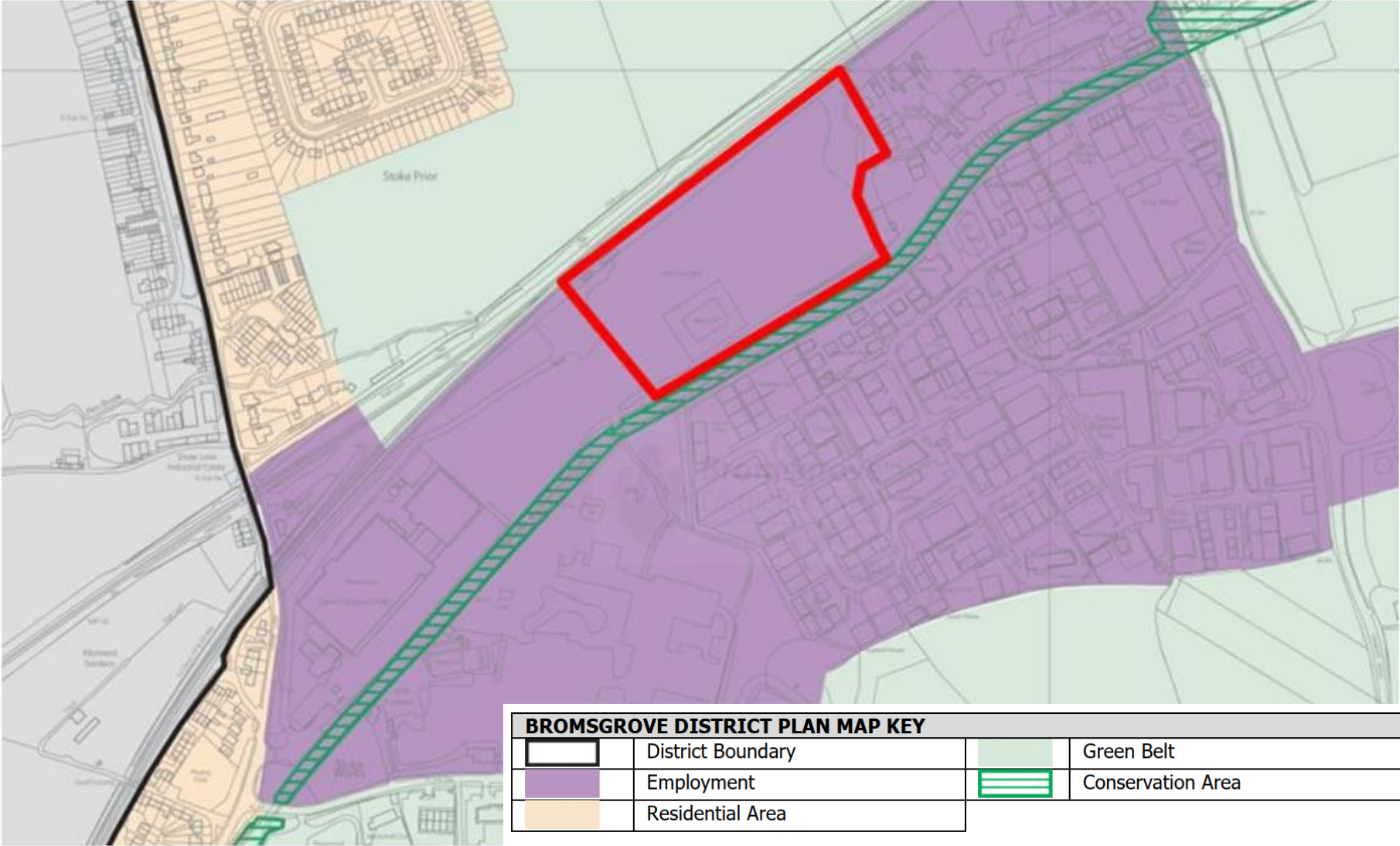
# Location Plan



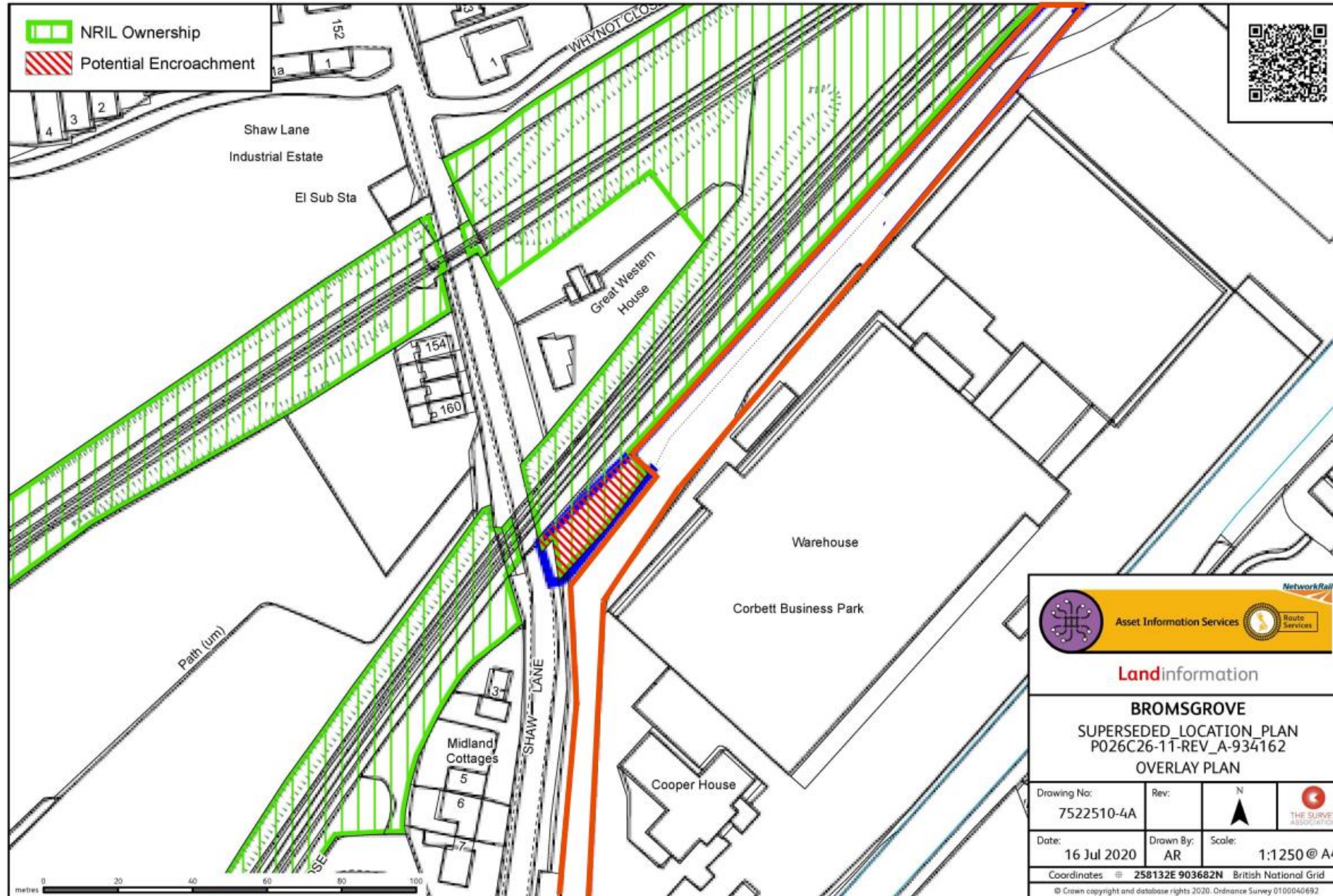
# Aerial Photograph



Extract from Bromsgrove District Plan with site added approximately in red



# Amended Plan to deal with railway encroachment



# Layout Plan Revision B



# Acoustic Fencing Plan

Scale: 1:1000@A2

Date: 24.06.2020

-  2.5m high Jakoustic® Reflective | Acoustic Fencing with 2.41m between Post Centres
-  2m high Jakoustic® Reflective | Acoustic Fencing with 2.41m between Post Centres



Illustrative CGI of how proposed development would appear.  
view looking north west





Illustrative CGI of how proposed development would appear.  
view looking north west



# Charnwood Park Home illustration

*Charnwood*



*Charnwood park home exterior*



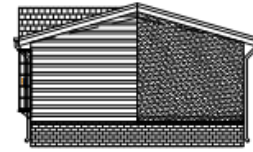
ELEVATION A



ELEVATION C

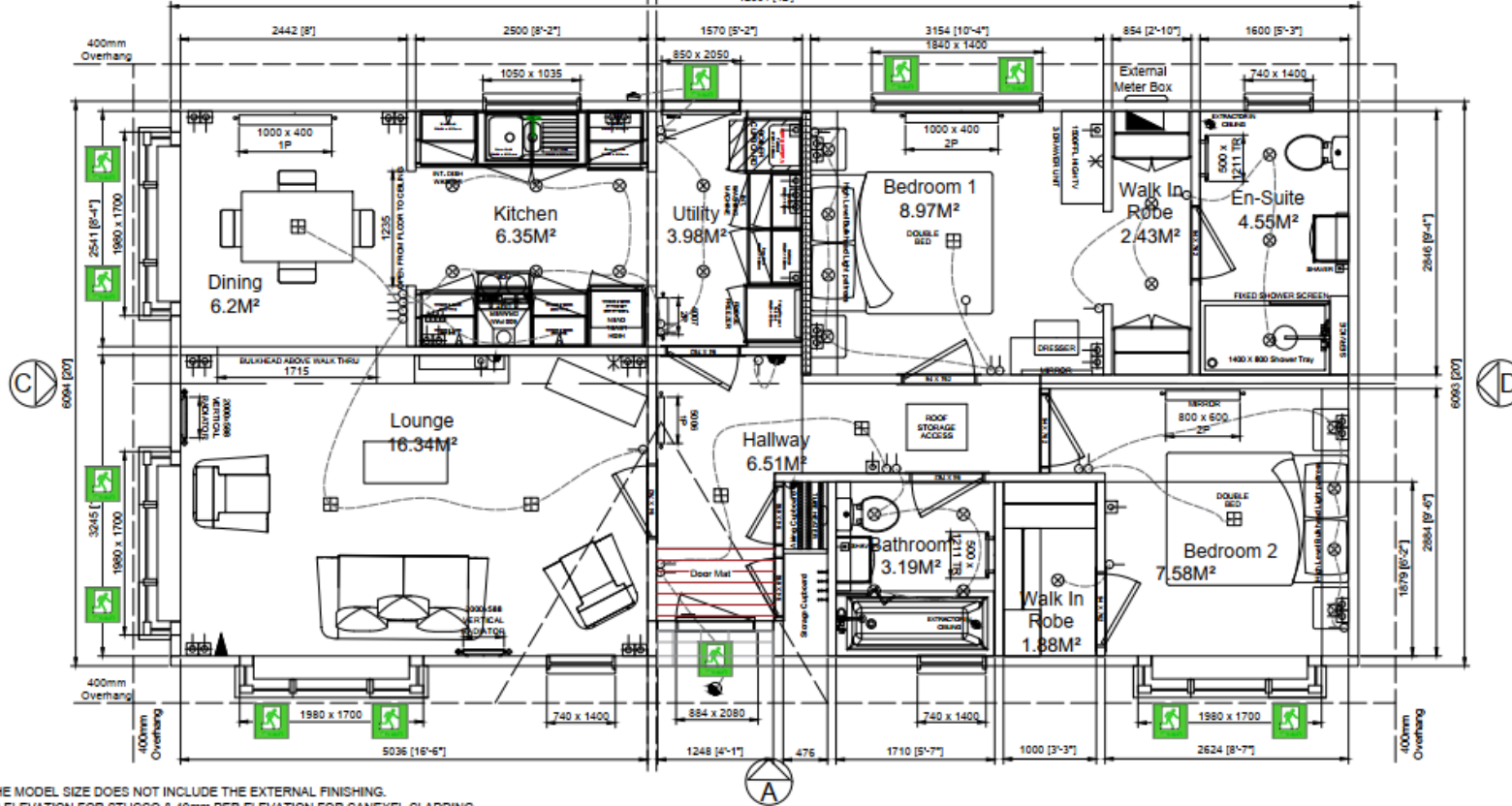


ELEVATION B



ELEVATION D

VAULTED B FLAT CEILING  
12804 [42]



PLEASE NOTE - THE MODEL SIZE DOES NOT INCLUDE THE EXTERNAL FINISHING.  
ALLOW 56mm PER ELEVATION FOR STUCCO & 40mm PER ELEVATION FOR CANEXEL CLADDING.



LEGEND	
	Single Socket
	Double Socket
	Telephone
	TV
	Fuse Spur
	Smoke Alarm
	Carbon Mono Detector
	Mechanical Extraction Fan
	3-Way Light Switch
	2-Gang Light Switch
	3-Gang Light Switch
	4-Gang Light Switch
	Light Point - Spotlight
	Light Point - Pendant
	External Spotlight
	External Wall light
	Under Locker Light
	Recessed Down light
	Flush Ceiling light
	LED Strip Light
	Internal Wall light
	Consumer Unit
	Meter Box
	Thermostat
	Shower Socket
	Single Socket (IP RATED)
	Double Socket (IP RATED)
	External Tap
	BARK Light
	Consumer Unit
	Satellite Connection

REV	DESCRIPTION	AUTH	DATE

SALES:	DATE

TITLE  
WILLERBY  
WILLERBY PARK HOMES  
CHARNWOOD  
12,804m x 6,094m (42ft x 20ft)  
DWG NO. CHA-01-0001-000

SCALE  
NTS

- NOTES:
1. Build in accordance to SSKMS
  2. Please see elevations details for correct setting out of exterior features.
  3. A further drawing will be sent to customer which includes the Production level.
  4. Dimensions are in 'feet'. Do not scale, if in doubt ASK.

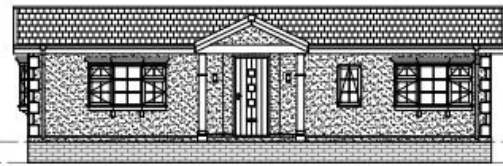
# Hazlewood Park Home illustration

---

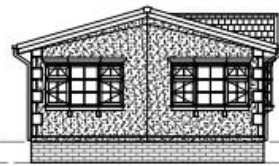
*Hazlewood Park Home*



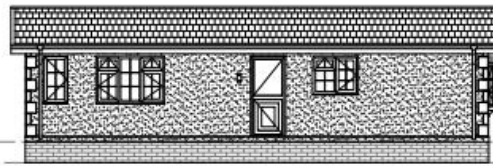
*Hazelwood park home exterior*



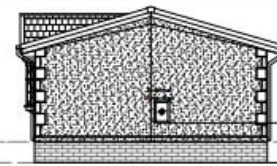
ELEVATION A



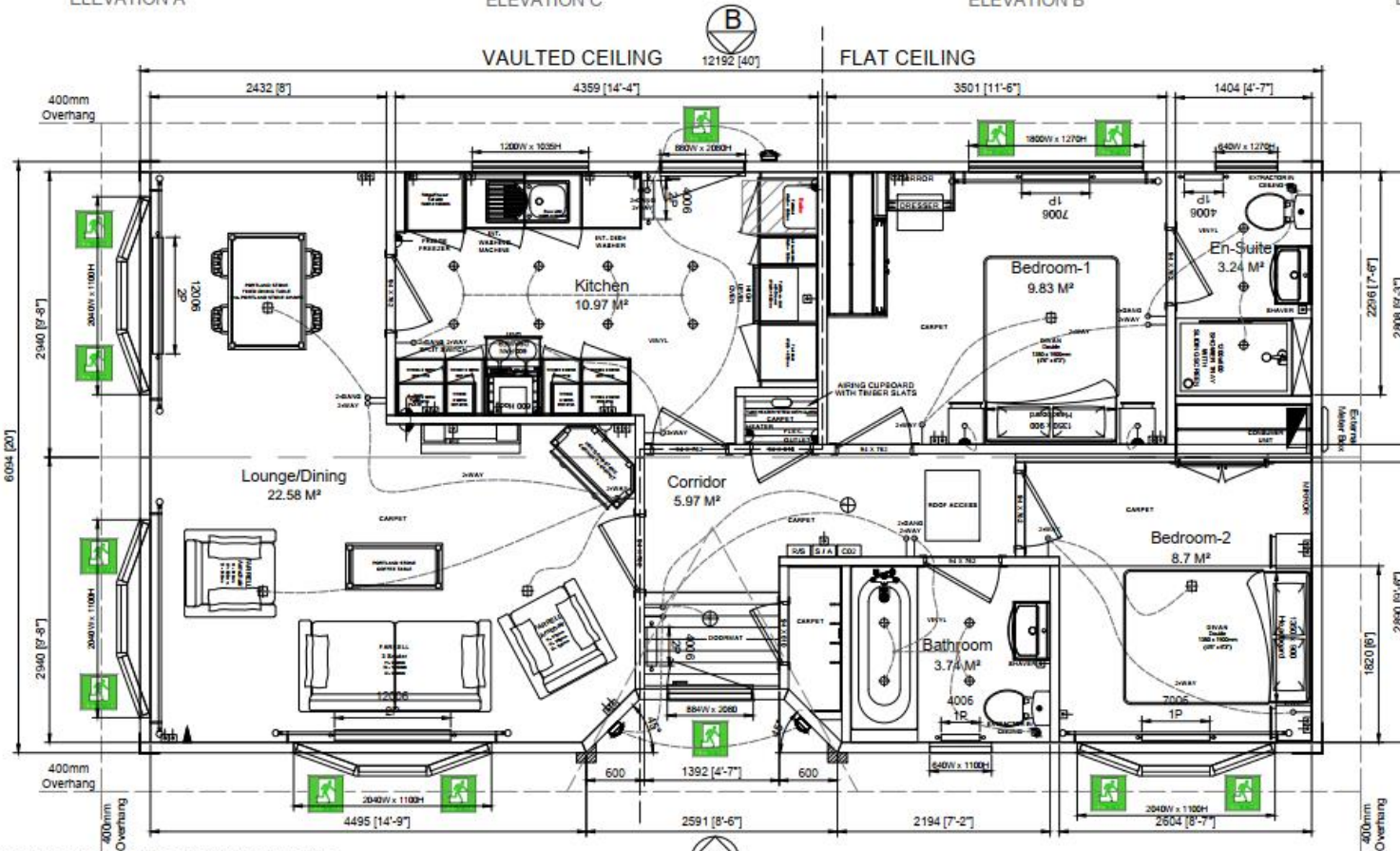
ELEVATION C



ELEVATION B



ELEVATION D



PLEASE NOTE - THE MODEL SIZE DOES NOT INCLUDE THE EXTERNAL FINISHING.  
 ALLOW 56mm PER ELEVATION FOR STUCCO & 40mm PER ELEVATION FOR CANEXEL CLADDING.

LEGEND		REV	DESCRIPTION	AUTH	DATE	SALES:	DATE	TITLE
	Single Socket	1	ISSUED FOR CLIENT REVIEW	AM	17/08/18	PRODUCT:	DATE	HAZLEWOOD
	Double Socket	2	UPDATED TO MATCH INVENTOR DETAILS	AM	17/08/18	TECHNICAL:	DATE	WILLERBY PARK HOMES
	3-Gang Light Switch	3	KITCHEN UNIT DETAILS CORRECTED	AM	13/09/18	NOTES:		HAZLEWOOD 2 BED
	4-Gang Light Switch	4	FLOOR CASSETTES OVERLAID	MM	20/11/18	1. Refer to Accuraplan to SGM/		12,192m x 6,094m (40ft x 20ft)
	LED Strip Light	5	DOOR & RADIATOR DETAILS UPDATED	AM	11/01/19	2. Please see elevation details for correct setting out of exterior features.		DWG NO.
	Light Point - Spotlight	6	DRAWING BORDER UPDATED	AM	21/08/19	3. A further drawing will be sent to customer when adopted for Production Issue		RPH-00-S002-000
	Light Point - Pendant	7	UPDATED FOR REVIT	MD	21/10/19	4. Dimensions are in 'Feet', Do not scale, 1/4"=1'-0".		SCALE
	Consumer Unit							NTS
	Mater Box							
	Thermostat							

**Park Homes**  
 PARK HOMES, THE HAZLEWOOD, HAZLEWOOD, WILSON, WILSON  
 THE DEVELOPER IS CONFIDENTIAL. THIS IS SUPPLIED BY  
 THE EXPRESS AGREEMENT THAT IT SHALL NOT BE  
 REPRODUCED, COPIED, EITHER WHOLLY OR PARTIALLY,  
 OR USED FOR ANY OTHER PURPOSES WITHOUT THE  
 WRITTEN CONSENT OF HAZLEWOOD HOLIDAY HOMES  
 COPYRIGHT RESERVED

# Delamere Park Home illustration

*Delamere Park Home*



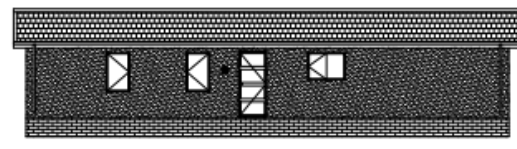
*Delamere park home exterior*



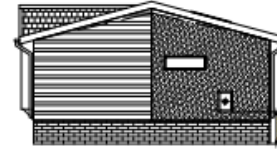
ELEVATION A



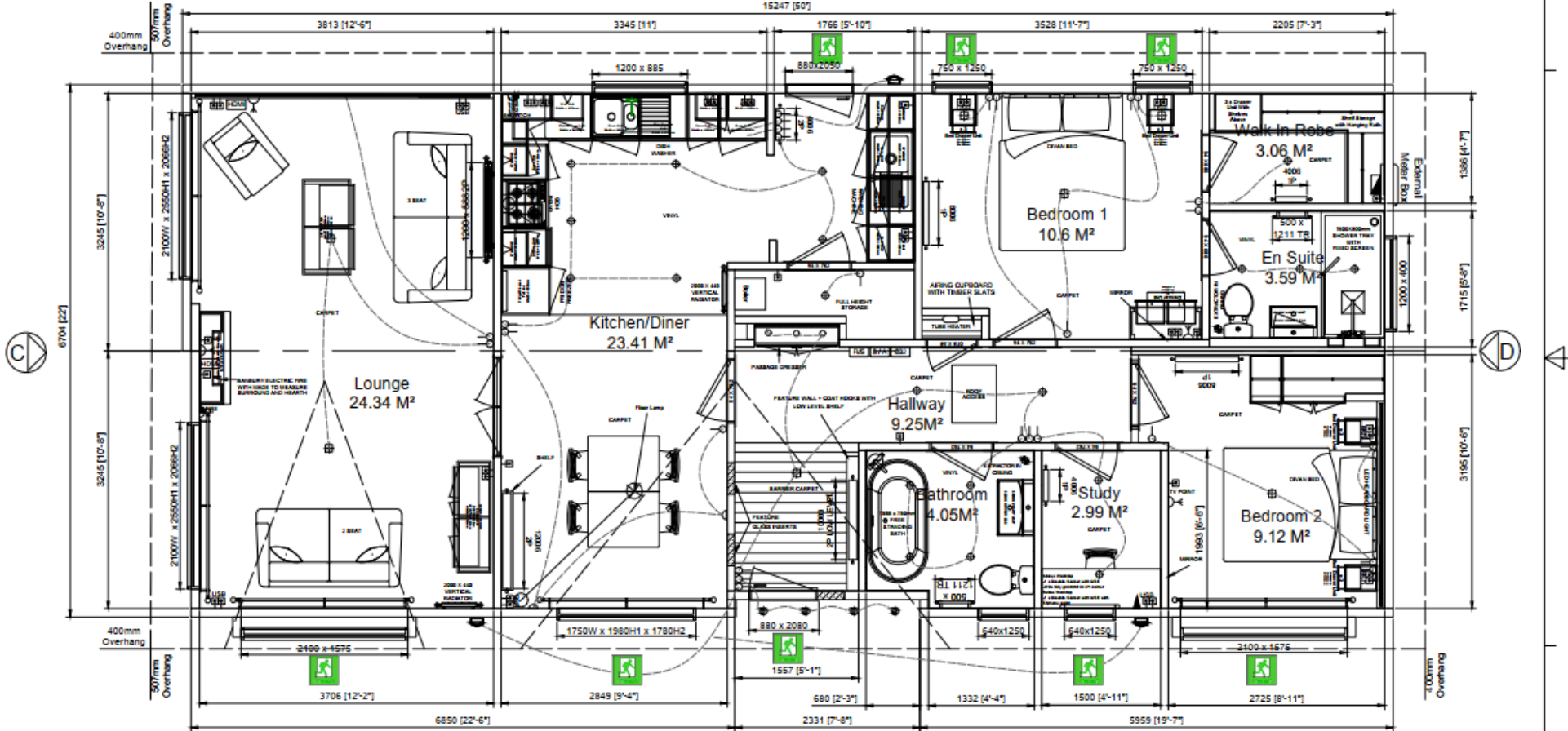
ELEVATION C



ELEVATION B



ELEVATION D



PLEASE NOTE - THE MODEL SIZE DOES NOT INCLUDE THE EXTERNAL FINISHING.  
ALLOW 56mm PER ELEVATION FOR STUCCO & 40mm PER ELEVATION FOR CANEXEL CLADDING.

**Park Homes**  
WILLERBY PARK HOMES  
15,247m x 6,704m (50ft x 22ft)  
DELAMERE

THIS DOCUMENT IS CONFIDENTIAL AND IS SUPPLIED ON THE UNDERSTANDING THAT IT IS NOT TO BE REPRODUCED OR COPIED IN ANY MANNER WITHOUT THE WRITTEN CONSENT OF WILLERBY PARK HOMES. COPYRIGHT RESERVED.

LEGEND	
	Single Socket
	Double Socket
	Telephone
	TV
	HDMI
	Power Spur
	Smoke Alarm
	Carbon Monoxide Detector
	Mechanical Extraction Fan
	2-Way Light Switch
	3-Gang Light Switch
	4-Gang Light Switch
	LED Strip Light
	Internal Wall Light
	Light Point - Spotlight
	Light Point - Pendant
	External Spotlight
	External Wall Light
	Under Locker Light
	Recessed Down Light
	Flush Ceiling Light
	LED Strip Light
	Internal Wall Light
	Consumer Unit
	Mailer Box
	Thermostat
	Shower Socket
	Single Socket (IP RATED)
	Double Socket (IP RATED)
	External Tap
	ESW Light
	Satellite Connection
	Duck to Down Sensor

REV	DESCRIPTION	AUTH	DATE
5	Removal of Non-Standard Items	MD	21/08/2019
7	Updated to spec	BF	01/10/2019

SALES:	DATE
PRODUCT:	DATE
TECHNICAL:	DATE

TITLE	SCALE
Willerby Willerby Park Homes DELAMERE 15,247m x 6,704m (50ft x 22ft) DWG NO. DEL-01-001-000	NTS

- NOTES:
1. Built in accordance to G5000.
  2. Please see elevation details for correct setting out of exterior features.
  3. A further drawing will be sent to customer when adapted for Production Issue.
  4. Dimensions are in 'mm', do not scale, if in doubt ASK.

# View from Birmingham and Worcester Canal tow path





# View of existing/proposed entrance from Shaw Lane –looking east



# View of existing/proposed entrance from Shaw Lane –looking south

